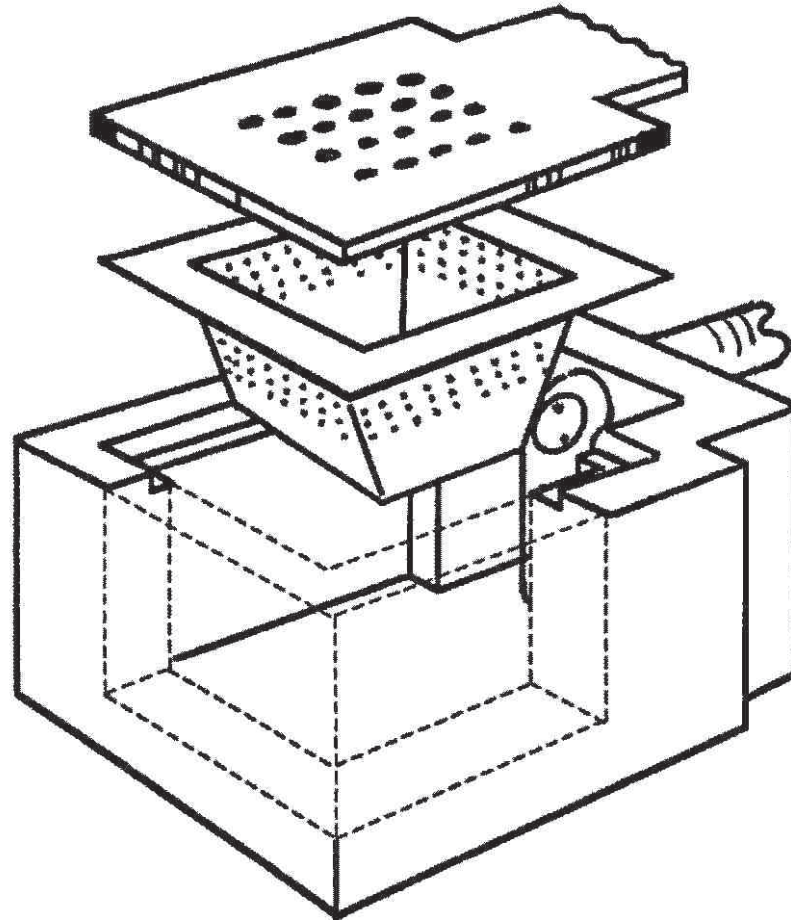


ENVIROSEP *Silt Pit - 2A*

Drawing No.
CP030



Larger Silt Pit's Available. P.O.A.

Dimensions (in Millimetres)

Length	640
Width	520
Height	550

Excavation Details

Length	700
Width	700
Depth	550

Unit Comes with Cast Iron Fittings, Galvanised Bucket & Perforated Plate.

All dimensions +/- 20mm

TITLE: Silt Pit - 2A	
Scale NTS	DATE 5 / 3 / 99
	DRW BY <i>[Signature]</i>
Drawing No CP030	CHECKED BY <i>[Signature]</i>
	DATE 5 / 3 / 99
Colac Cement Products PTY LTD	
Address: 21 Forest Street Colac, Victoria, 3250 Australia	Phone: (03) 5231 5231 Fax: (03) 5232 2744